

## Recombinant Phospho-DRP1 (Ser616) Monoclonal Antibody

catalog number: AN301321L

**Note:** *Centrifuge before opening to ensure complete recovery of vial contents.*

### Description

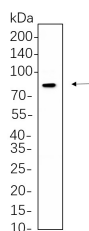
<b>Reactivity</b>	Human;Mouse;Rat;Bovine
<b>Immunogen</b>	A synthetic peptide corresponding to residues around (Ser616) of Human Phospho-DRP1
<b>Host</b>	Rabbit
<b>Isotype</b>	IgG, $\kappa$
<b>Clone</b>	B1084
<b>Purification</b>	Protein A
<b>Buffer</b>	PBS, 50% glycerol, 0.05% Proclin 300, 0.05% protein protectant.

### Applications

### Recommended Dilution

<b>WB</b>	1:2000-1:10000
<b>IF</b>	1:200-1:1000
<b>ELISA</b>	1:5000-1:20000

### Data



Western Blot with Recombinant Phospho-DRP1 (Ser616) Monoclonal Antibody at dilution of 1:1000 dilution. Lane

A: HeLa whole cell lysate.

**Observed-MW:82 kDa**

**Calculated-MW:82 kDa**

### Preparation & Storage

<b>Storage</b>	Store at -20°C Valid for 12 months. Avoid freeze / thaw cycles.
<b>Shipping</b>	Ice bag

### Background

This gene encodes a member of the dynamin superfamily of GTPases. The encoded protein mediates mitochondrial and peroxisomal division, and is involved in developmentally regulated apoptosis and programmed necrosis. Dysfunction of this gene is implicated in several neurological disorders, including Alzheimer's disease. Mutations in this gene are associated with the autosomal dominant disorder, encephalopathy, lethal, due to defective mitochondrial and peroxisomal fission (EMPF). Alternative splicing results in multiple transcript variants encoding different isoforms.

### For Research Use Only